

MAXIMUS

Completion Systems



LINER HANGER SYSTEMS

365 Manjusar G.I.D.C.,
Taluka Savli,
Vadodara- 391745,
Gujarat State,
India.

www.maximuscompletions.com

**MAGNUS HYDRAULIC LATCH
LANDING COLLAR**

TECH UNIT No.	262
MODEL	MHLC
DATE	06/01/2018
REV.	00

LINER HANGER SYSTEMS TECHNICAL UNIT

Authored by: RAJAT

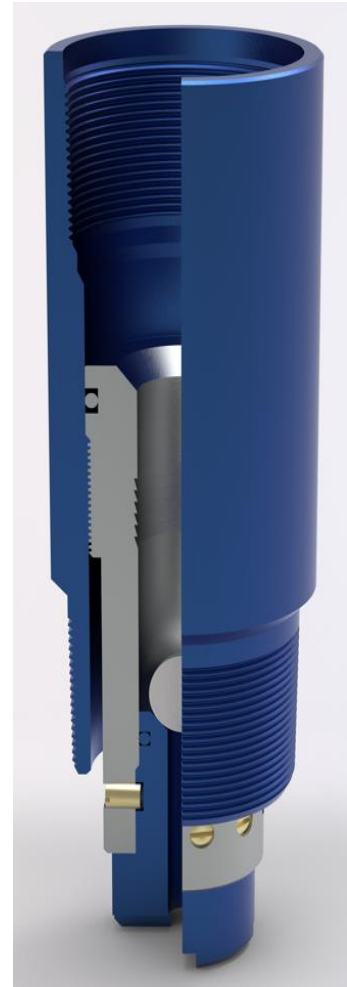
MAGNUS HYDRAULIC LATCH LANDING COLLAR

Approved by: Jogendra Singh

DESCRIPTION & APPLICATION:

Landing Collar is used when setting liner hanger prior to cementing. A setting ball seat in the shear seat of the “MLHA” allowing pressure to be applied to the hanger to set the slips. Increasing the pressure after setting the hanger shears the ball seat allowing full circulation for cementing operations. The shear rating of the ball seat is adjustable to meet the requirements of the hanger.

The “MLHA” incorporates a latch with Non-rotational Mechanism to accept, lock and seal the Liner Wiper Plug upon completion of cementing.



SIZE AVAILABILITY :

- AVAILABLE SIZES :- 3-1/2" TO 20".